



SouthWare offers a scalable set of specialized solutions designed to grow with your business

### FINANCIAL MANAGEMENT

- Accounts Payable
- Accounts Receivable
- Collections Adapter
- General Ledger
- Payroll
- Job Cost
- Fixed Assets
- Cash Flow Ledger



### DISTRIBUTION

- Inventory Control
- Order Entry
- Purchasing
- Return Authorization
- Partial Shipment/Hold for PO
- Assembly Work Orders
- Warehouse Tracking

### POINT OF SALE

- Advanced Touch Screen Interface
- Paperless Credit Card Processing
- Customer Purchase History Tracking
- Product Images
- Barcode Scanning
- Special Order Management

### MATURITY

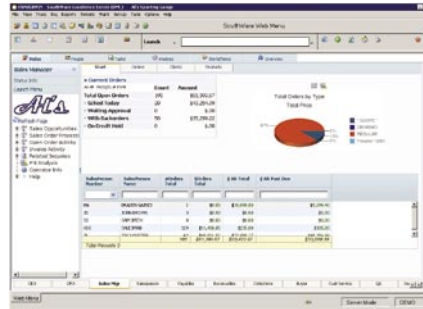
With SouthWare you get the most mature business software available. We've been able to incorporate new technology into each revision without rewriting our software from scratch. You get software that has the depth of functionality that comes only with many years of experience.

### ADAPTABILITY

One key to a successful business is the ability to customize the system for your special needs while retaining compatibility with future upgrades. Powerful tools allow you to change screens, customize forms, add new data fields and build-in your custom business rules and processes that make you unique. These changes automatically apply to new updates.

### PERSONAS & PORTALS

Personas and Portals simplify the screen layout and let the user focus on their roles and goals. Portals include both status data and links to the programs and functions that each user is most likely to need. Since these portals are web based, it is easy to personalize the individual portals to handle personal preferences and changing job duties.



▶ The SouthWare Excellence Series is a fully integrated family of business applications for your accounting and related processes. The features have been refined over the years to handle the most challenging needs of thousands of businesses. SouthWare products are easily scaled from small to large systems so your business will not outgrow your software.

▶ SouthWare lives on your server, there is no need to invest in expensive computers or upgrade your existing desktop equipment. A robust server environment is all that is required. Users may access the system through any standard operating system (Window, Mac, or Linux). The system can also be accessed through smart phones, iPhone, Android and iPad.



▶ Advanced Systems Group consultants understand your industry and the risks that you face every day. Every solution is designed to mitigate risk, reduce labor, and increase profit. Each solution is tailored to provide the information you need to make decisions related to your business quickly and confidently.



Over 20 years of experience helping businesses like yours become more profitable.

**ADVANCED SYSTEMS PARTNERS**

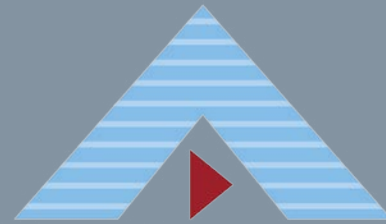
- Team Sports / Sporting Goods
- Retail Operations
- Manufacturing
- Rental Equipment
- Parts Distribution Industry
- Service Industry
- Many more

**ADVANCED SYSTEMS SOLUTIONS**

- Accounting
- Business Decision Making
- Customer Relationship Management (CRM+)
- Distribution, Sales/Service/Rental, Inventory, POS
- E-Commerce and E-Business
- Features for specialized markets

**ADVANCED SYSTEMS SERVICE**

- Business Consulting
- Network Infrastructure
- Microsoft Certified
- Linux Certified
- Unix Certified
- 24 / 7 Support



Advanced Systems Group, Inc.

6660 S. Sheridan Rd.  
Ste. 160

Tulsa, Ok 74133

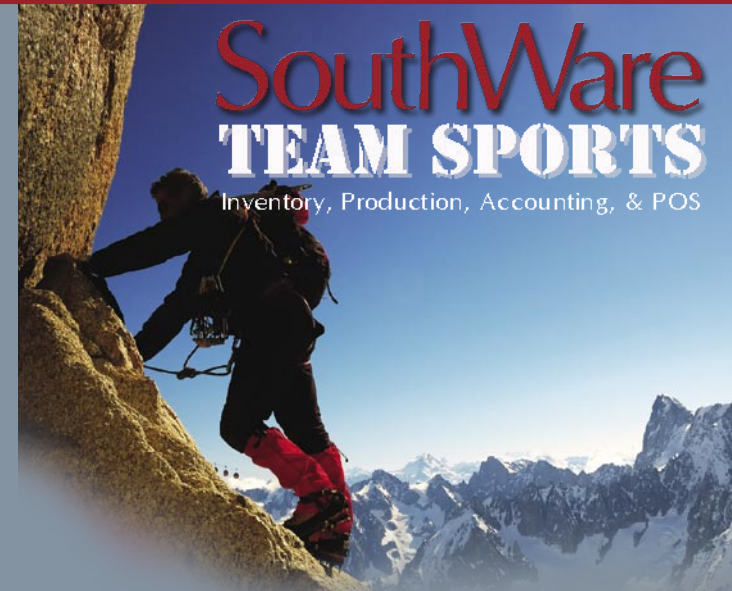
888-627-0200

918-523-2700

asg-us.com

**SouthWare**  
**TEAM SPORTS**

Inventory, Production, Accounting, & POS



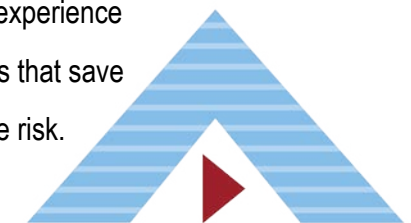
**SouthWare**  
**TEAM SPORTS**

Inventory, Production, Accounting, & POS

▶ **See farther into your future.**

Business Software  
E-Business Solutions  
Engineering Services

Over 20 years of experience providing solutions that save money and reduce risk.



Advanced Systems Group, Inc.