

ExecuMate II™

In today's fast-paced world you don't have time to dig through mountains of reports to answer questions like these. If you need instant and total insight into your financial picture, you need ExecuMate II.

S O U T H W A R E E X C E L L E N C E S E R I E S >

BENEFITS

EXCELLENCE SERIES TOOLS

CEO Portal

Executive Portal

Tasks | News | Financial | Sales | Service | Alerts | Goals

Sales Management

	Count	Amount
Orders Dated Today	0	\$0.00
Total Open Orders	53	\$21,517.84
- Orders with Backorders	9	\$6,246.99
- Orders Scheduled to Ship Today	2	\$75.25
Open Quotes	2	\$1,125.55

Invoice History

Invoiced Sales - PTD	\$22,368.22
Invoiced Sales - YTD	\$135,546.68
Last 30 Days Invoices (9 Invoices)	\$4,754.24
Sales Gross Profit	\$4,475.97 (02%)

Financial

Cash Balance	112,252
YTD Income	20,207

Daily Orders and Invoices

View ExecuMate II Info

Profit / Loss Zone		COMPANY TOTALS	
Current	Lyn Same Per	Year-to-Date	Lyn Yr-to-Dt
Sales	26,913	150,572	0
Cost of Sales	11,794	76,095	0
Gross Profit	15,119	74,567	0
Operating Expenses	12,541	54,438	0
Net Operating Income	2,578	20,129	0
Other Revenue/Expenses	48	79	0
Net Income	2,626	20,207	0

Zoom FROM Summary Financial

Operating Expenses

Account Desc	Current	Lyn Same Per	Year-to-Date	Lyn Yr-to-Dt	Account#
Salaries	2,675	15,335	6010-000		
Salaries			6010-010		
Salaries			6010-020		
Officer Salaries	1,800	10,800	6020-000		
Officer Salaries			6020-010		
Officer Salaries			6020-020		
Wages	1,846	10,876	6030-000		
Wages			6030-010		
Wages			6030-020		
Bonuses			6040-000		
Bonuses			6040-010		
Payroll Tax Expense - FICA	482	2,844	6050-000		
Payroll Tax Expense - FICA					
Payroll Tax Expense - FICA					
Payroll Tax Expense - FUII	24				
Payroll Tax Expense - FUII					
Payroll Tax Expense - FUII					
Payroll Tax Expense - SUUI	31				
Building/Land Lease	271				

TO Detail Accounts

TO Individual Transactions

E/L Account Inquiry

Account# 6010-000 YTD 17,935.11

Beginning 01/01/04 Ending 06/30/04 15,335.00

Transaction Zeros For 6010-000

Date	Type	Debit	Credit	RefDesc 1	RefDesc 2	RefDate	Reference Key
06/06/04	Acct Rec		25.00	Slay Corporation Inv#	303 CPO	06/04/04	303 401 130
06/15/04	Payroll	650.00		Slay		06/15/04 07	22024616000150
06/15/04	Payroll						
06/30/04	Payroll						
06/30/04	Payroll						

Transaction Zeros For 6015-000

Date	Type	Debit	Credit	RefDesc 1	RefDesc 2	RefDate	Reference Key
06/15/04	Payroll	650.00		Slay		06/15/04 07	22024616000150

- Know your up-to-the-minute overall financial picture
- Review a summary of each important accounting area
- Zoom into deeper layers of detail all the way down to individual transactions
- Interactively review your financial statements at any level of detail
- Get "Alert" warnings for key financial areas
- Check financial results for different profit centers
- Continually monitor today's sales
- Know your current cash situation and how it got that way
- Graph trends and relationships in your financial data
- Keep and analyze summary statistics on all your business activity

ExecuMate II is an Executive Information System that gives you a window into the financial health and activity of your business. You can press a key to bring up a review screen that presents an up-to-the-minute summary of the thousands of pieces of information in your SouthWare Excellence Series™ business system. In less than a minute you can check all the vital signs for your company. Then spend as much time as you need zooming into the details of the areas that need your attention.



Features & Functionality

Summary Analysis

- Company Totals or Profit Center Detail
- Cash and Aging totals
- Trigger "Alert" warnings
- Financial Statement totals
- Zoom into details behind each number

Accounting Area Summaries

- Overview screen and detail zoom analysis into important facts about:
 - Accounts Receivable
 - Accounts Payable
 - Inventory/Sales Series
 - Service Management Series
 - Payroll
 - Job Cost

Cash

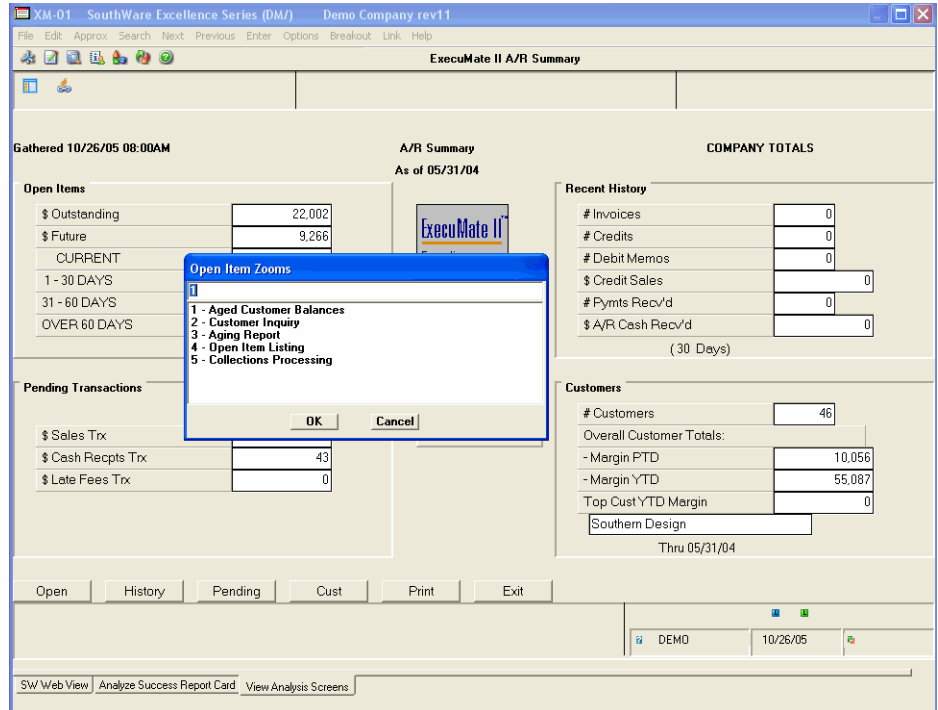
- Current balance
- Cash Worksheet
 - Last 10 weeks actual cash flows
 - Next 10 weeks projected cash flows
 - Uses actual trends and assumptions
- Comparative A/R and A/P aging

Business Indicators/Statistics

- Monitor Today's Sales
- Status of Key Files
- Summary Activity Statistics per day, week, month, etc.
- Trigger "Alerts" for G/L accounts or financial ratios

Interactive Financial Statements

- Zoom from totals to section to account to transaction details
- Option to include data not yet in G/L



Specialized Area Summaries

Graphs

- User-defined bar or stacked-bar display
- Automatically updated
- Output data to other graph software



SouthWare Innovations, Inc.
 P.O. Box 3040
 Auburn, AL 36831-3040
 Phone: 334-821-1108
 Fax: 334-821-1146